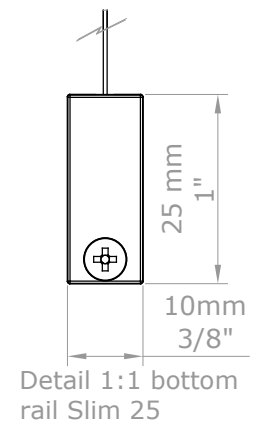
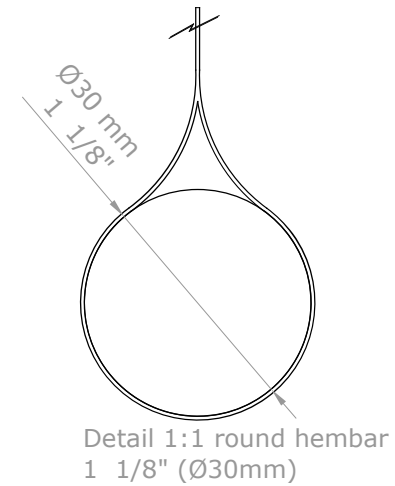
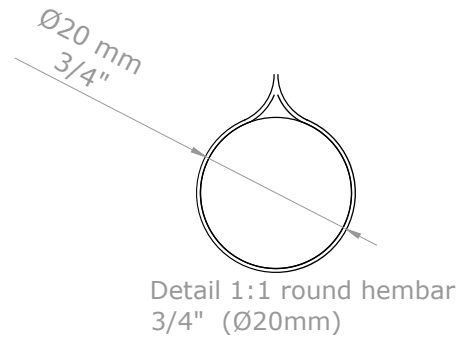
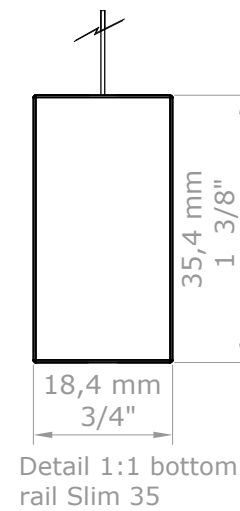
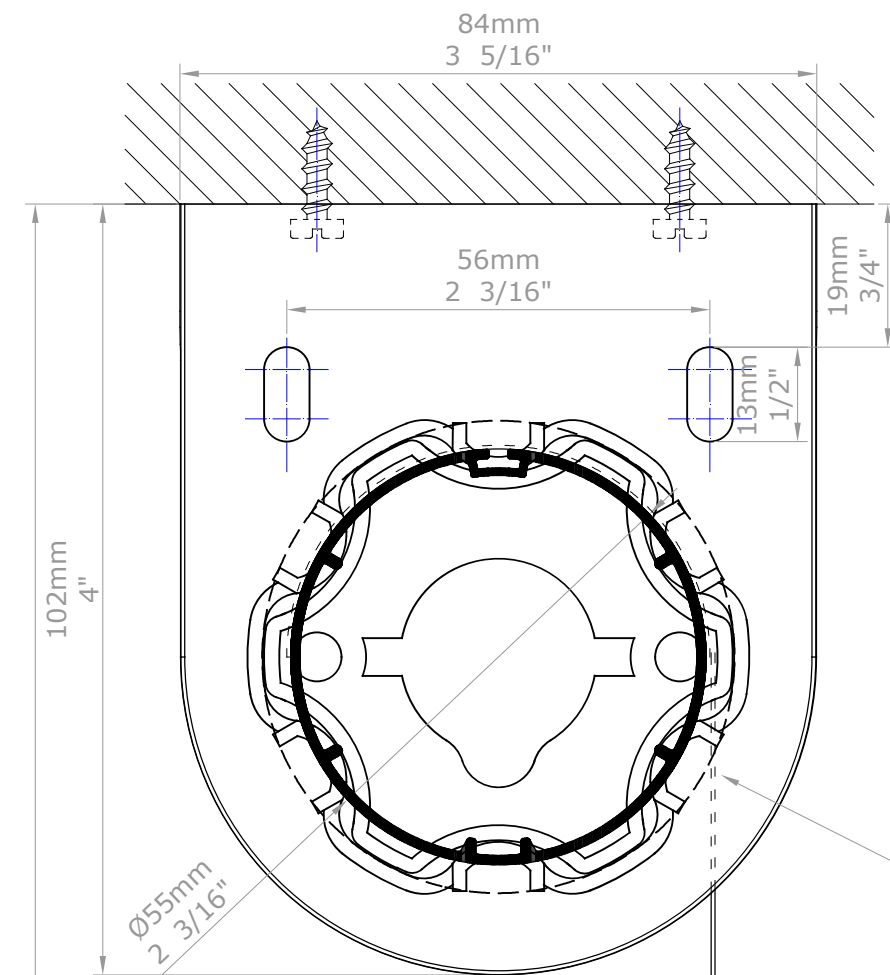
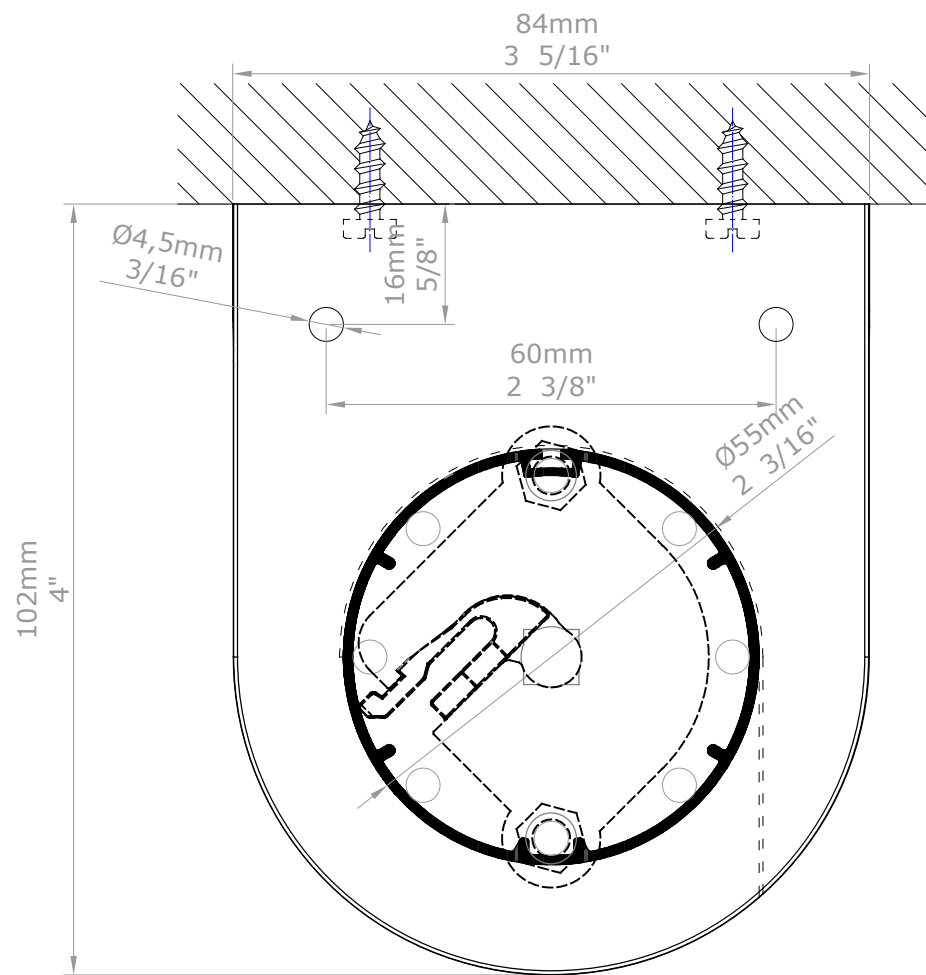


OPPOSITE SIDE

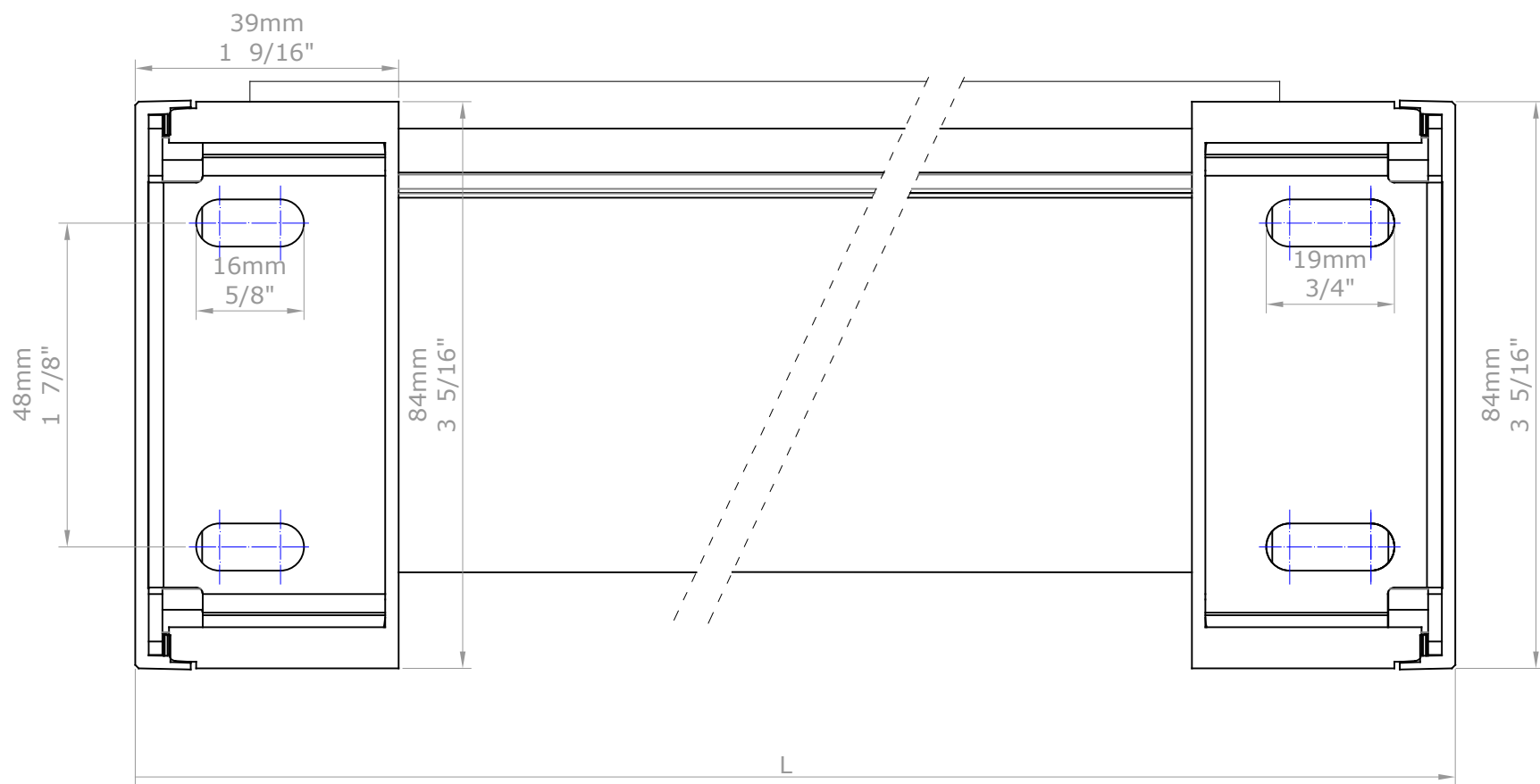
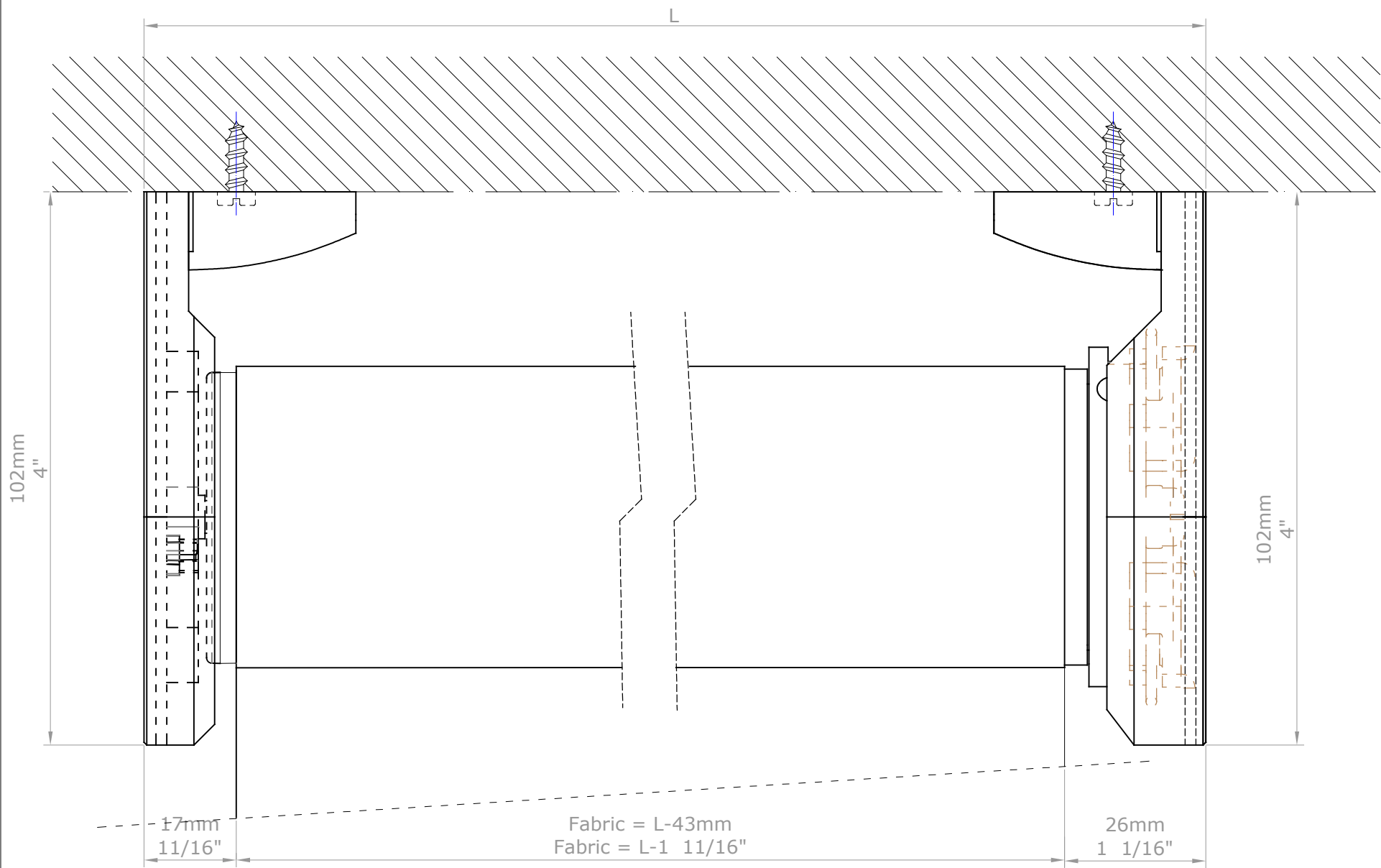
OPERATION SIDE



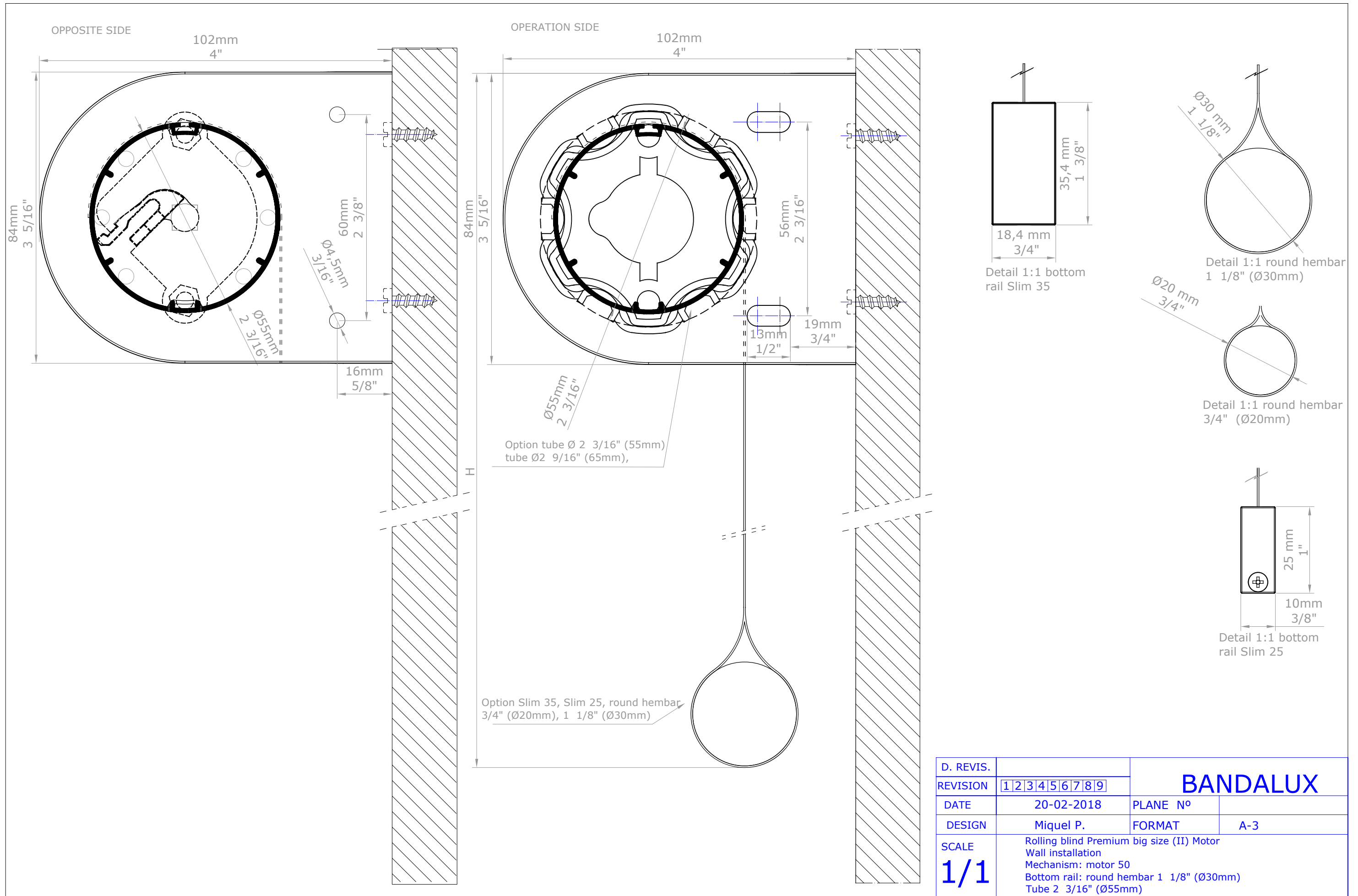
Option tube Ø 2 3/16" (55mm)
tube Ø2 9/16" (65mm),

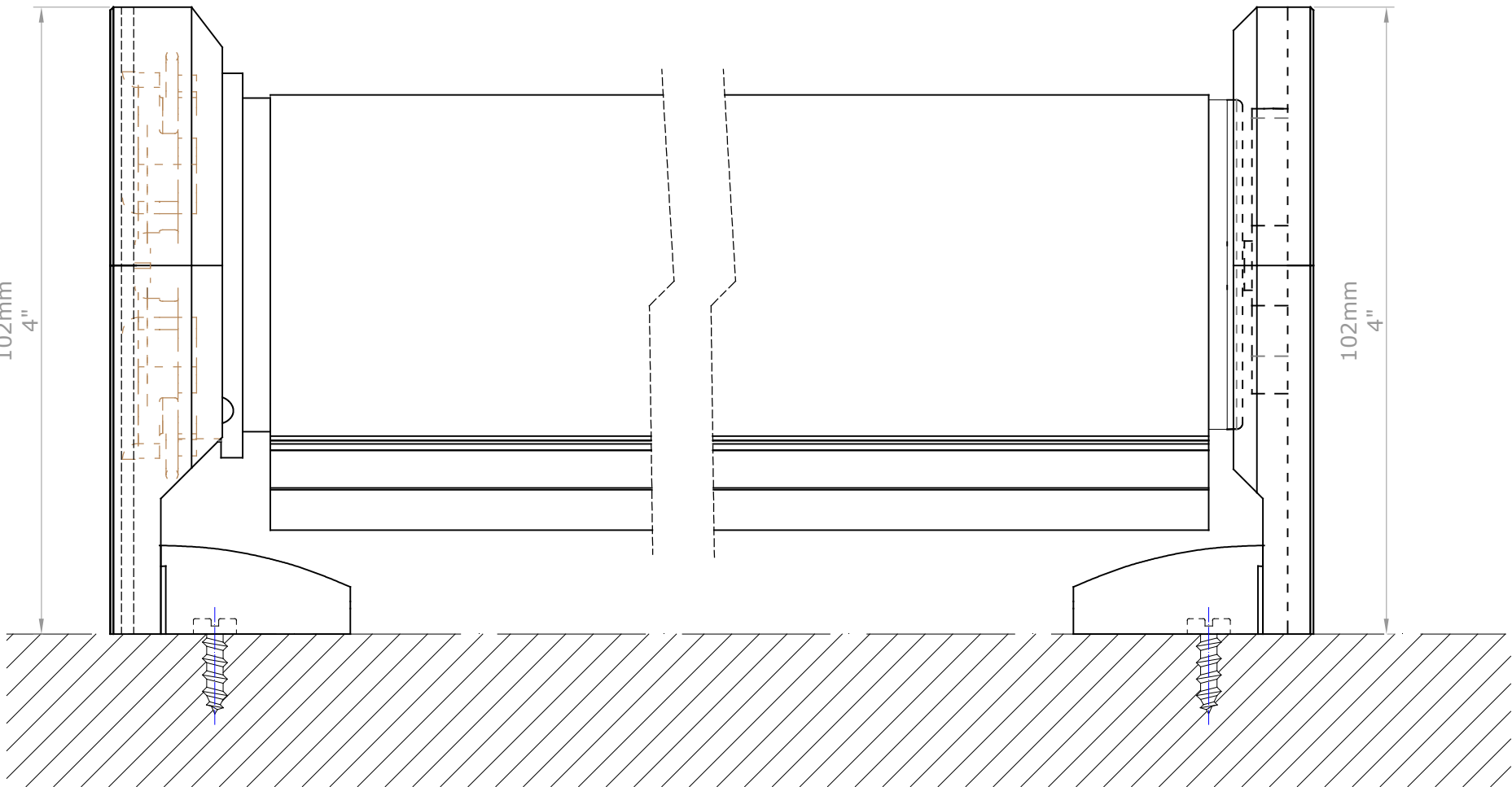
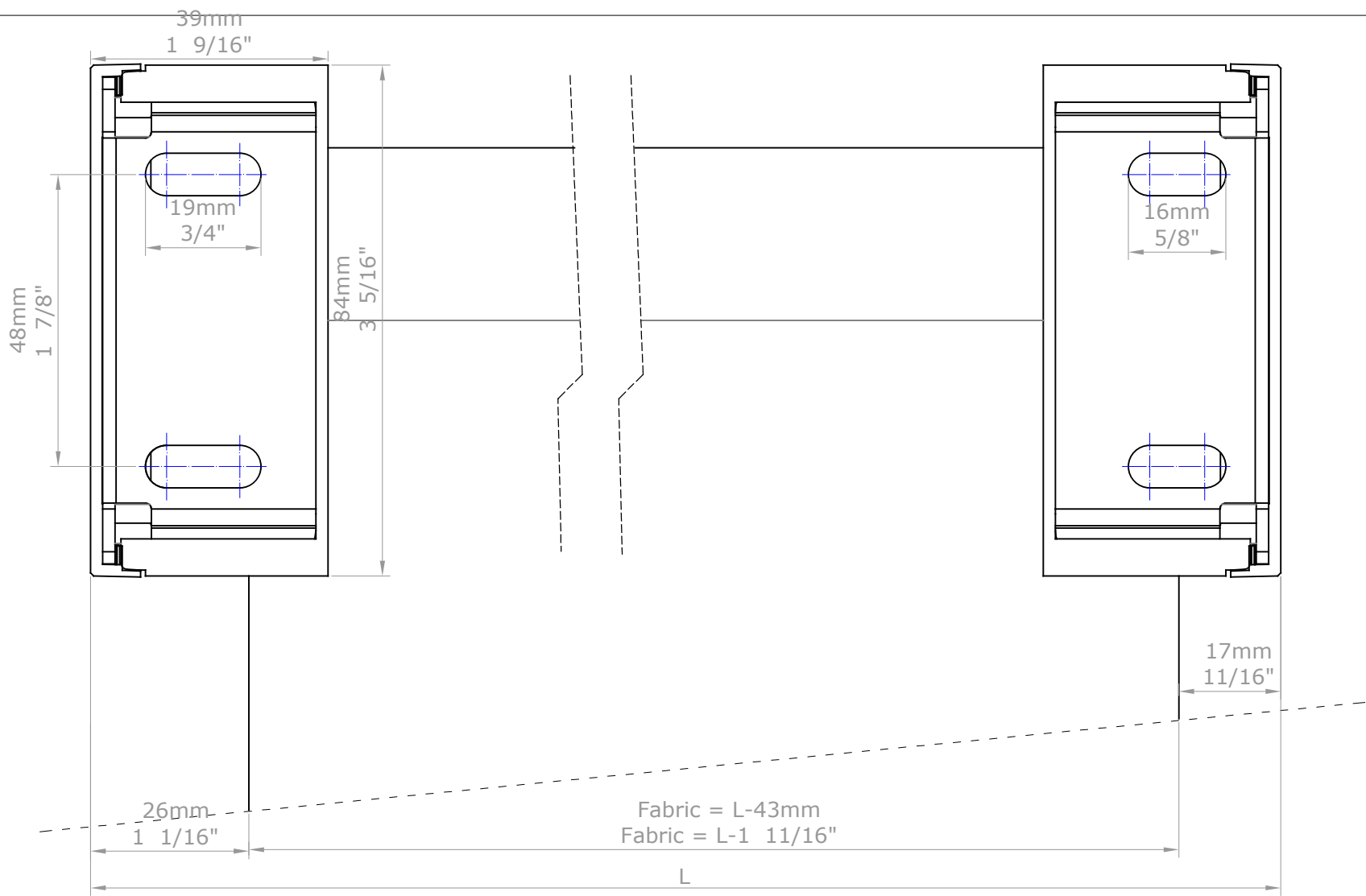
Option Slim 35, Slim 25, round hembar
3/4" (Ø20mm), 1 1/8" (Ø30mm)

| | | | |
|-----------|--|----------|-----|
| D. REVIS. | | BANDALUX | |
| REVISION | 1 2 3 4 5 6 7 8 9 | | |
| DATE | 20-02-2018 | PLANE N° | |
| DESIGN | Miquel P. | FORMAT | A-3 |
| SCALE | Rolling blind Premium big size (II) Motor Ceiling installation Mechanism: motor 50 Bottom rail: round hembar 1 1/8" (Ø30mm) Tube 2 3/16" (Ø55mm) | | |
| 1/1 | | | |



| | | | |
|-----------|--|----------|-----|
| D. REVIS. | | BANDALUX | |
| REVISION | 123456789 | | |
| DATE | 20-02-2018 | PLANE N° | |
| DESIGN | Miquel P. | FORMAT | A-3 |
| SCALE | Rolling blind Premium big size (II) Motor Ceiling installation Mechanism: motor 50 Bottom rail: round hembar 1 1/8" (Ø30mm) Tube 2 3/16" (Ø55mm) | | |
| 1/1 | | | |





| | | | |
|-----------|---|----------|-----|
| D. REVIS. | | BANDALUX | |
| REVISION | 123456789 | | |
| DATE | 20-02-2018 | PLANE N° | |
| DESIGN | Miquel P. | FORMAT | A-3 |
| SCALE | Rolling blind Premium big size (II) Motor Wall installation Mechanism: motor 50 Bottom rail: round hembar 1 1/8" (Ø30mm) Tube 2 3/16" (Ø55mm) | | |
| 1/1 | | | |